

## Create a Jewish Legacy Launches in Orange County: Our Foundation Leads the Way in Uniting our Community to Benefit our Jewish Future

On October 1, 2013, our Foundation launched the Create a Jewish Legacy program in partnership with the Harold Grinspoon Foundation. Create a Jewish Legacy (CJL) is a proven program that trains our local Jewish agencies and synagogues to work together to build endowment funding for future generations. After a thorough application process, we have selected nine local partner institutions into the first phase of this program.

- Beth Jacob
- Bureau of Jewish Education
- Community Scholar Program
- Hebrew Academy
- Heritage Pointe
- Jewish Federation & Family Services Orange County
- Tarbut V'Torah
- Temple Bat Yahm
- Temple Beth El

The Foundation serves as the center point and mentor for the CJL program in Orange County, and we provide extensive training, marketing assistance and incentive grants to our partner organizations. Each partner has signed a Brit Kodesh (covenant) to invest all funds obtained through the program with the Foundation.

The CJL program benefits everyone who is involved. Our local Jewish institutions benefit



**The Rosiak Family created their legacy plan this year.**

### What will your legacy be?

through increased endowed giving and connection with their members. Donors benefit from being a part of a unified legacy program that sustains the organizations they care about most. And, the Foundation receives increased visibility and relevance as the unbiased central Jewish organization in Orange County. As stated by CSP Founder Arie Katz, "with the introduction of their new Create a Jewish Legacy program in our community, the Jewish Community

Foundation of Orange County is providing all of us a strong foundation upon which we can build the future of Jewish Orange County. We are honored to participate in this program and want to give a 'shout out' to the Foundation for its vision and achievement."

Each year, the Foundation will celebrate our community partners and those who have committed to leaving a legacy gift at our annual Endowment Book of Life signing ceremony.

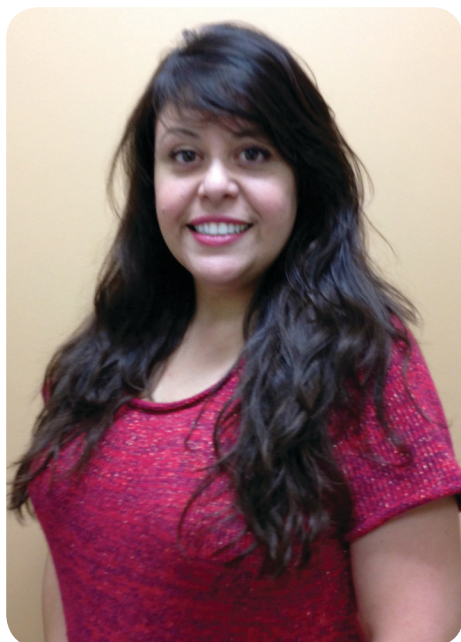
*"There is no Jewish non-profit in our county doing more for the future of Orange County Jewry or which is better at bringing the community together for a common effort than the Jewish Community Foundation of Orange County. Their leadership, guidance and support in establishing a community-wide effort to leave an enduring legacy will not only ensure the future of Jewish youth but will bring stability and energy to every segment of our population and the agencies that serve them." — David Lewis, Executive Director, Bureau of Jewish Education Orange County*

## The Foundation is GROWING!

We are pleased to announce the expansion of our professional staff here at the Jewish Community Foundation Orange County. The next time you are in the area, stop by and welcome Anne and Vanessa to our Foundation community.

Vanessa brings over 15 years of experience in office management and bookkeeping to our Foundation. She has exceptional organizational skills and a strong knowledge of numerous software programs. While Vanessa began her career in fashion design and merchandising, her educational background is in accounting. Working for the Foundation, Vanessa can fully utilize both her creative and

### Vanessa Ashley



**Administrative Associate**

financial abilities. She is passionate about volunteering, and she enjoys spending time with her four-legged children (of the canine variety). Vanessa was raised in southern California and currently lives by the beach.

### Anne Friedman



### Marketing and Communications Associate

Anne brings 20 years of experience running her own small business to the Foundation. In that capacity, Anne was responsible for all of the sales, bookkeeping, communications and marketing, while simultaneously working as an administrative associate in an accounting office. Anne lives in Long Beach, CA with her fiancé, and has 2 grown children. Always eager to learn new things, Anne attends Cal State University, Long Beach, where

she is furthering her education in Communication Studies. In her spare time she loves to travel and is an active volunteer. She volunteers each month at Temple Beth Sholom in Santa Ana, and she sits on the Board of Directors of a small non-profit that does monthly collaborative community service projects.

Join the Foundation's ground-breaking effort to create a bright and vibrant tomorrow for our community!

Call, email or stop by the Foundation office for a confidential conversation on creating your own personal legacy plan.

### For more information contact:

Wendy Arenson,  
Director of Legacy Planning  
[wendy@jcfoc.org](mailto:wendy@jcfoc.org)



1 Federation Way, Suite 210  
Irvine, CA 92603-0174  
949.435.3490  
[www.jcfoc.org](http://www.jcfoc.org)